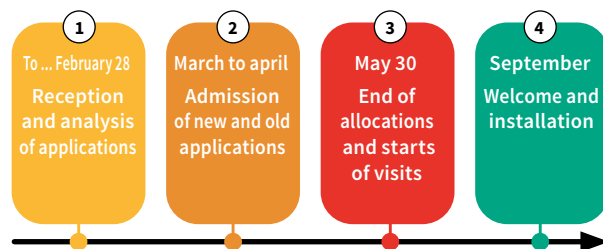


EXAMPLE OF AN ENTRY ROUTE



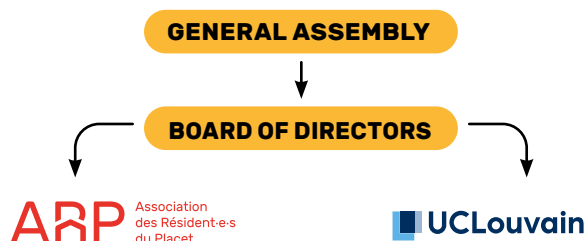
CITIZEN PARTICIPATION AND GOVERNANCE INCLUDING PLACET RESIDENTS

Centre Placet considers its residents to be full partners, hence the existence of the ARP (Association des Résidents du Placet) since its creation in Leuven in 1968: **it is a de facto association within the Placet NPO** and is composed of ALL Placet residents.

The General Assembly meets 2 or 3 times a year. In November, this Assembly is convened to **elect a team of 4 representatives** who will propose a programme of activities to the residents. The Statutes require a diversity of nationalities and gender parity.

Once elected, **this Committee makes up 50 % of the Centre Placet's Board of Directors** and is part of the General Assembly: it represents the residents and collects the needs, requests and expectations formulated and passed on to the Board.

The ARP's elected committee also organises **recreational, sporting and cultural activities** for residents, some of which are open to a wider public. Each elected member of the ARP is required to bring together a group of residents who actively participate in the organisation of activities.



A TEAM AND PEOPLE AT YOUR SERVICE AT CENTRE PLACET

Director
Jean-Marie MUTORE
+32 (0) 10/47 48 90
jean.mutore@placet.be

Hostel Unit
Baptiste MERTENS
+32 (0) 10/47 91 99
baptiste.mertens@placet.be

Isabel ALVAREZ
+32 (0) 10/47 39 79
isabel.alvarez@placet.be

Maintenance
Fouad AIT OUMARIR
Eddy PIETQUIN
Stéphane SPITAEELS
Helen ABRAHA KUDROM
+32 (0) 10/47 91 99
+32 (0) 10/47 46 90

Citizenship Education,
Intercultural Actions Unit
David AMRAM
+32 (0) 10/47 45 45
+32 (0) 479/48 72 92
david.amram@placet.be

Justine BLANCHY
+32 (0) 10/47 45 45
+32 (0) 470/19 19 78
justine.blanchy@placet.be

Victoria VANDERMEERSCH
+32 (0) 10/47 45 45
+32 (0) 483/24 69 95
victoria.vdmeersch@placet.be

Support Unit
Administration & Accounting
Souad LEPOIVRE
+32 (0) 10/47 91 98
souad.lepoivre@placet.be

Florence THIBAUT
+32 (0) 10/47 46 92
florence.thibaut@placet.be

Aline VANDEN PEEREBOOM
+32 (0) 10/47 46 92
aline.vandenpeereboom@placet.be

Accommodation & Accounting
Thomas PIRON
(Accommodation)
+32 (0) 10/47 46 90
(Accounting)
+32 (0) 10/47 91 98
logement@placet.be
thomas.piron@placet.be

Communication & IT support
Hugues PIETQUIN
+32 (0) 10/47 24 56
hugues.pietquin@placet.be

Editor: Jean-Marie Mutore - Rue des Sports, 2 - 1348 Louvain-la-Neuve (Belgium) -- Graphic design: Hugues Pietquin -- Translation: Callixte Nizigama



Belgium
partner in development



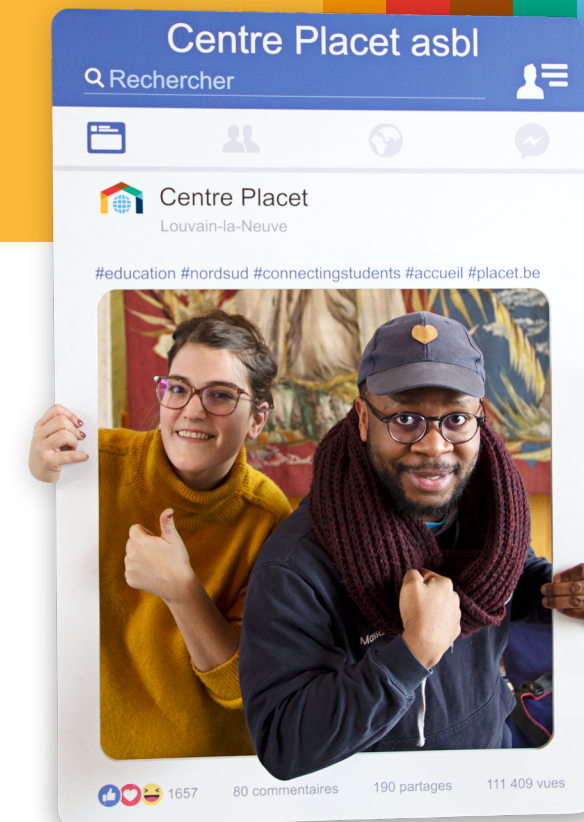
UCLouvain



FÉDÉRATION
WALLONIE-BRUXELLES



Wallonia



INTERNATIONAL HOSTEL FOR UCLouvain STUDENTS FROM BELGIAN COOPERATION PARTNER COUNTRIES

A space for intercultural encounters in the city of
Ottignies - Louvain-la-Neuve

Rue des Sports, 2 - 1348 Louvain-la-Neuve (Belgique)

[f placet.asblcentreplacet](https://www.facebook.com/placet.asblcentreplacet) [@ info@placet.be](mailto:info@placet.be) placet.be



WHO WE ARE ?

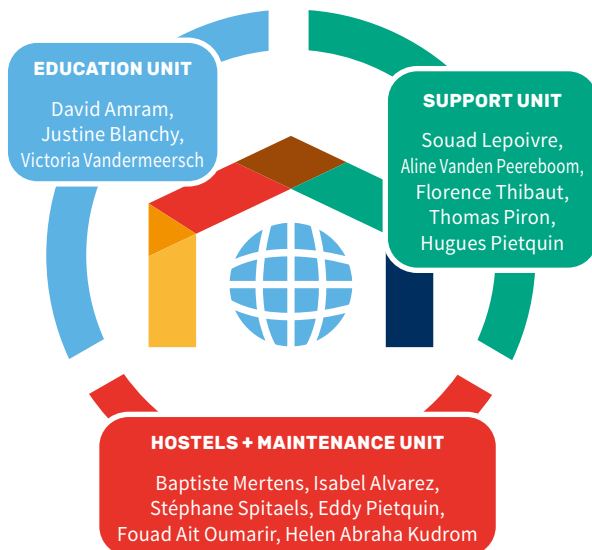
The Centre Placet is a **residence hall for international students of UCLouvain** from Belgian cooperation partner countries, recognised and subsidised by the Directorate General for Cooperation (DGD) since 1973.

Each year, more than a hundred residents are accommodated, members of the hostel, articulated around a participative citizen project where the residents are actors of their stay, thanks to the infrastructures and means provided by the Placet NPO, with the support of a permanent team.

As soon as they arrive, the residents are given a **personal welcome at Placet, social and civic support** throughout their stay, and **support for social and academic integration**. In return, our residents commit to adhere to the values of Centre Placet, to live and foster **intercultural relations** through numerous **cultural, creative and festive** activities that are organised throughout the year.

Much more than just accommodation, it is a **community life project** for its residents during their studies at UCLouvain.

STRUCTURE OF CENTRE PLACET



PLACET CHARTER

The Placet Project is participatory: residents sign a charter inviting them to actively participate in the actions and reflections set up by Centre Placet team and the Association des Résidents du Placet (ARP).

COMMUNAUTÉ MÉTISSE

The *Communauté Métisse* is a project promoting inclusion between international and Belgian students in Louvain-la-Neuve, around collective activities.

THE DUO FOR KNOWLEDGE PROJECT

A new way of creating a mix between researchers and citizens who are passionate about research, for more openness and intercultural and intergenerational relations, reinforcing the principle of global citizenship.

In addition to the review of academic work, the aim is to encourage encounters and create intercultural links between students from the South and volunteer citizens that can last beyond the academic stay.

HOSTELS UNIT

- Accommodation and free Internet connection,
- Social support,
- Capacity building: ICT training, Xmind, Powerpoint, North-South/South-South exchange workshops,
- Festive, sports and cultural activities.



CROSS-CUTTING SUPPORT

An administrative team in charge of **management, accounting, communication and maintenance**.

CIVIC EDUCATION AND INTERCULTURAL ACTIONS UNIT

Reflection groups aimed at promoting a democratic society. Permanent debates and participation, between students and citizens of Louvain-la-Neuve, around social issues.

The Centre for Expression and Creativity «Atelier aux Couleurs du Monde»: artistic and creative activities for children and adults.

Rental of halls, at democratic prices, for activities promoting **social links, interculturality and cultural expression**.

